

Ultimate Swinging Screen for Inswing Rectangle and Arch Top French Doors

Installation Instructions



MARVIN 
Windows and Doors

Built around you.™

BEFORE YOU BEGIN

Read these instructions thoroughly before beginning to assemble and install your Ultimate Swinging Screen Door. Inspect parts shipped with unit for damage and that all assembly parts have been received.



WARNING: Practice Safety! Wear safety glasses or goggles.



Installation Tip: For ease of installation remove screen inserts from the panels. See index for location of Insert removal. 6 9/16" wood Inswing French door installations will require the help of an assistant or removal of screen door panels (remove hinge screws) from Z-bar prior to installation.

You Will Need to Supply:

Rubber mallet	Safety glasses
Screw gun	1/16" drill bit
#1 and #2 Phillips bit	Utility knife
Straight slot screwdriver	Flat pry bar

INDEX

	Page
Install Jamb Adapters	3
Install Head Jamb Z-bar	3
Install Hinge Jamb Z-bar	3
Install Hinge Jamb Z-bar (6 9/16" Jamb)	4
Aligning the Panels	4
Install Handle Kit	4
Install Latch Strike	5
Install Screen Door Closer	5
Adjust Closing Tension	5
Adjust Closing Speed	5
Sill Sweep Weather Strip	6
Sill Sweep Adjustment	6
Mesh Screen or Storm Insert Installation	6
Mesh Screen or Storm Insert Removal	6
Optional Top Screen Door Closer Installation	6
Adjust Closing Tension	6

Ultimate Swinging Screen - Parts Shipped: (X = One Wide) (XX = Two Wide)

Main Shipping Carton

X	XX	
1	2	Ultimate panel w/ screen insert, attached hinge Z-bar, sill sweep
0	1	Astragal assembly (attached to passive panel of double)
2	2	Jamb adapter
1	1	Head jamb Z-bar
1	0	Latch stile Z-bar
1	1	Instruction Manual
1	1	Premium handle kit (see handle kit breakdown)
1	1	Active panel closer kit (see closer kit breakdown)
1	1	Installation screws and hardware kit (see screw and hardware kit breakdown)

Glass Carton

X	XX	
1	2	Optional Glass Insert

Handle Kit

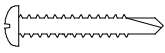
1	Premium exterior handle assembly (Brass PVD, Bronze PVD, Satin Nickel PVD, or Satin Taupe)
1	Interior handle assembly
1	Handle shaft
2	Handle attachment screws
1	Latch strike
2	Strike attachment screws #8 x 3/4"

Closer Kit

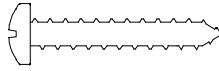
1	Closer assembly
1	Closer hold open bracket
1	Door bracket
2	Door bracket screws #10 x 5/8"
1	Jamb bracket
4	Jamb bracket screws #10 x 1"
1	Head jamb bracket (optional usage)
1	Short connecting pin (closer rod to jamb bracket)
1	Split connecting pin (closer rod to head jamb bracket) [optional usage]
1	Long grooved connecting pin (closer cylinder to door bracket)



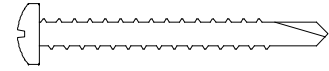
IMPORTANT: Screw and hardware kit includes parts for 4 9/16" and 6 9/16" Marvin wood and clad Inswing French Door configurations. Please use chart to determine which screws are required for your door.



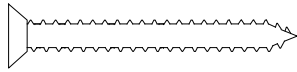
A



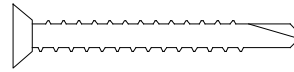
B



C



D



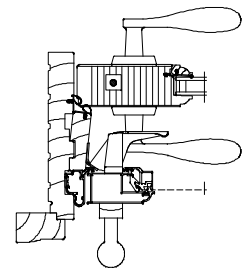
E

ID	Screw and Hardware Kit	Quantity		Jamb Mounting				Mull Post Mounting	
		X	XX	Clad 4 9/16"	Clad 6 9/16"	Wood 4 9/16"	Wood 6 9/16"	Clad	Wood
	Identification and Application								
(A)	#4 x 3/4" Self tapping screw (Jamb adapter attachment)	14	14	Y	Y	Y	N	Y	Y
(B)*	#8 X 1" Standard screw (Hinge Z-bar attachment)	8	16	Y	N	N	N	Y	Y
(C)	#8 x 1 1/2" Self tapping screw (Hinge Z-bar attachment)	8	16	N	Y	Y	Y	N	N
(D)*	#8 X 1 1/2" Countersink screw (Head jamb Z-bar attachment)	9	6	Y	N	N	N	Y	Y
(E)	#8 x 1 1/2" Self tapping screw (Head jamb Z-bar attachment)	9	6	N	Y	Y	Y	N	N
	0.24" Panel hinge shims (Panel alignment adjustment)	16	16	Y	Y	Y	Y	Y	Y

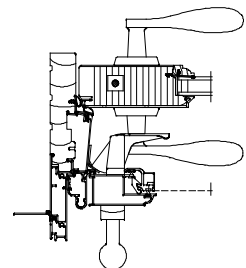
*NOTE: * Use for 4 9/16" Clad OXX or XXO mullied units; longer screws may penetrate through exterior side of the door frame or mull post.*

Jamb, Sill and Mull Post Details

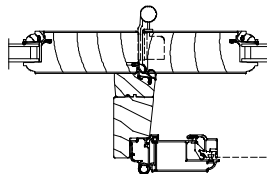
6 9/16" Wood Ultimate Inswing French Door Jamb Detail



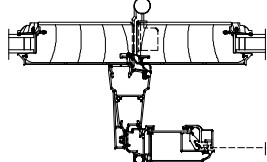
6 9/16" Clad Ultimate Inswing French Door Jamb Detail



4 9/16" Wood Ultimate Inswing French Door Jamb Detail



4 9/16" Clad Ultimate Inswing French Door Jamb Detail



1. Unpack unit and separate jamb adapters and head jamb Z-bar from panels. See page 2 to determine which screws are required for assembling your unit.

Install Jamb Adapter

For jamb adapter placement on your French door see jamb and mull post details on page 2.

NOTE: For 6-9/16" jamb wood units the Jamb adapter is assembled to Z-bar and not screwed to jamb. Proceed to step 5.

2. Place and center the jamb adapter against jamb so there is an even space between the jamb adapter and sill and jamb adapter and head jamb. See figure 1.



Figure 1

3. Make sure the jamb adapter is seated and tight against the jamb and part stop. Use the #4 x 3/4" (A) self tapping screws to fasten the jamb adapter to the part stop through the pre-drilled holes in the jamb adapter. See figure 2.

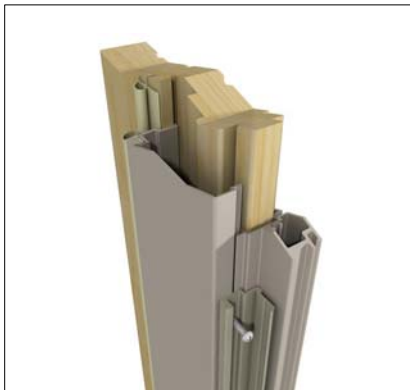


Figure 2

4. Repeat above process for the other jamb adapter.

Install Head Jamb Z-bar

5. Place and center the head jamb Z-bar at the unit head jamb between the side jambs. Using the head Z-bar existing holes as a template drill 1/8" pilot holes into the head jamb. Secure the head Z-bar to the head jamb with the following screws:

- #8x1 1/2" (D) flat head screws for 4 9/16" clad units.
- Use #8x1 1/2" (E) screws for all other units. See figure 3.



Figure 3

Install Hinge Jamb Z-bar

NOTE: For wood 6 9/16" units proceed to step 11

6. Unpack a screen door panel and orient correctly in front of the door by using the Z-bar top miter joint as a guide. Lift and align the bottom of the hinge Z-bar (attached to panel) to the sill contour. See figure 4. Guide the leg of the Z-bar between the jamb adapter and the jamb.



Figure 4

7. With the screen panel in the closed position, engage the hinge Z-bar to the jamb adapter by firmly tapping along the full length of the Z-bar with a soft rubber mallet. A "snap" will be heard when the Z-bar is properly seated into the jamb adapter. See figure 5.

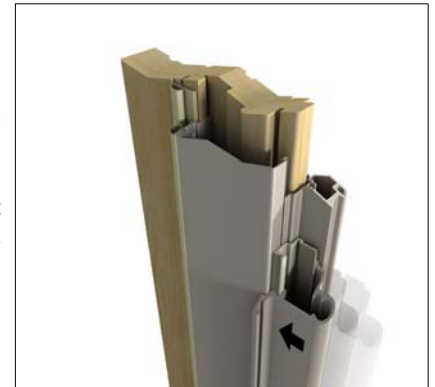


Figure 5

8. Once the Z-bar is properly engaged to the jamb adapter, the screen panel can be carefully opened. If the hinge Z-bar disengages the jamb adapter when the panel is opened, the Z-bar was not properly seated; repeat step 7.

9. Insert a flat pry bar between the sill and hinge Z-bar to carefully slide the hinge Z-bar upward until the miters of the head Z-bar and hinge Z-bar align. See figure 6.



Figure 6

- Using existing holes in the hinge Z-bar as a guide, drill 1/8" pilot holes, install and tighten the appropriate sheet metal screws:

- #8 x 1" (B) for 4 9/16" clad and mulled units
- #8 x 1 1/2" (C) for all others.

Repeat for all holes at hinges. See figure 7. Proceed to step 15.

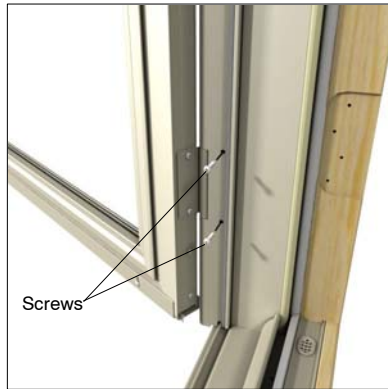


Figure 7

Hinge Jamb Z-bar Installation Procedures for Wood Doors With 6 9/16" Jambs



NOTE: This step will require an assistant

- Assemble the jamb adapter to the Z-bar by snapping the extrusions together. See figure 8.
- Center the jamb adapter along the length of the Z-bar.
- With the panel in the open position, slide the Z-bar/ jamb adapter assembly into position on the jamb.

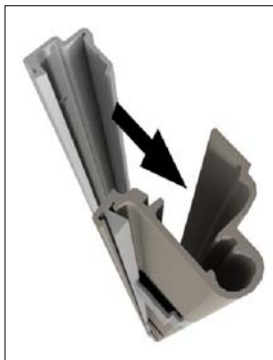


Figure 8

- Align the miter joint of the Hinge Z-bar and the head Z-bar and hold in place; insert the following appropriate screw, see figure 9, and tighten:

- #8x1" screw (B) 4 9/16" clad and mulled units
- #8x1 1/2" screw (C) on all other units.

NOTE: Continue for 6 9/16" wood doors and resume installation procedures from step 10 for all other doors.



Figure 9

- Repeat above steps for the other panel on two wide screen doors.

Align the Panels

- Close the passive panel and engage the top and bottom flush bolts. If the passive panel top flush bolt does not engage, the panel position can be adjusted by inserting the supplied hinge shims (F) between the passive panel and hinge.

- Open the passive panel and depending on which direction the panel needs to move remove the top or bottom 4 hinge screws. Insert the necessary size and number of shims to ensure that the flush bolt engages the top Z-bar and tighten screws. See figure 10.



Figure 10

NOTE: It should never be necessary to shim more than two hinges to achieve alignment.

- If the gap between the passive and active panel is not even repeat the alignment procedure for the active panel.

Install Handle Kit

- Assemble exterior handle, handle shaft, and interior handle, making sure the handle shaft properly engages both the interior and exterior handle mechanisms. See figure 11.

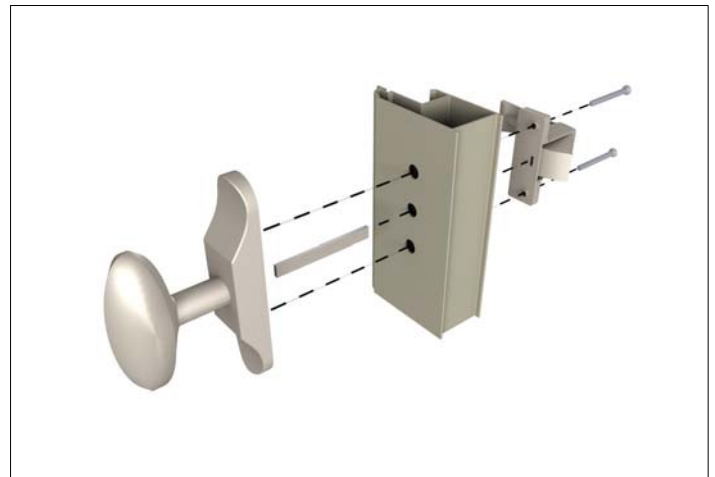


Figure 11

Latch Strike Installation

20. Close the screen door and center the latch strike on the interior handle catch. Using the holes in the latch strike mark the position of the screw placement on the jamb for X units and on the passive astragal for XX units.
21. At the point marked, drill 1/16" pilot holes in the jamb or passive astragal. Snug just over finger tight with the provided #8 x 3/4" screws. See figure 12.

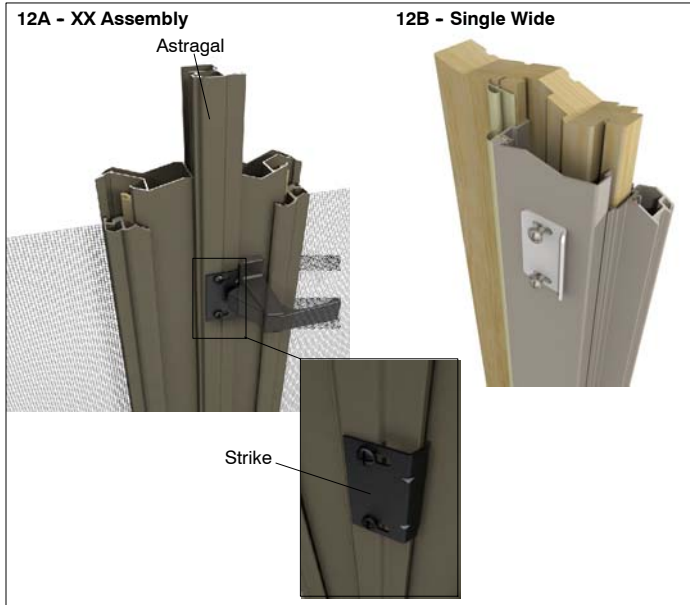


Figure 12

22. Close the screen door and adjust strike by tapping on either the interior or exterior side of the strike. After you are satisfied that the active screen door is closing tight against the jamb, securely tighten down the strike screws.

Screen Door Closer Installation

NOTE: For optional head jamb installation on rectangle doors see step 37.

23. Position jamb bracket in lower inside corner of door frame on the side jamb 1 1/4" (32) above the sill and 1 1/8" (29) from the face of primary door. See figure 13. Mark and drill four 1/8" pilot holes.
24. Attach jamb bracket with four #10 x 1" screws from closer kit. See figure 13.

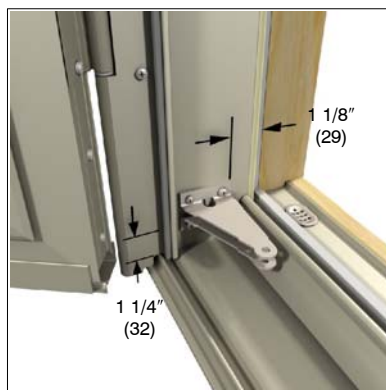


Figure 13

25. Place hold-open-washer on closer rod and position over lugs. This will give proper tension for installation. See figure 14.

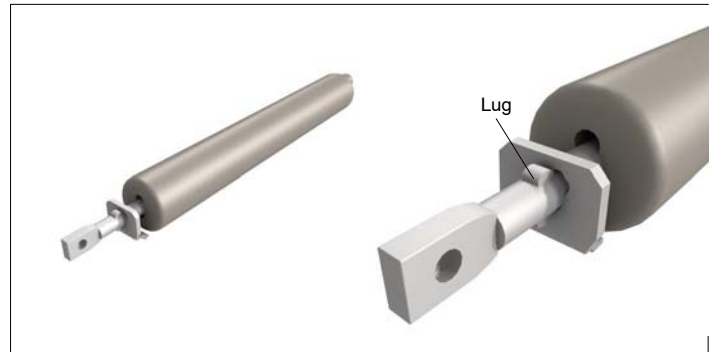


Figure 14

26. Close and latch the door. Attach the closer assembly to the door and jamb brackets with the door and jamb bracket connecting pins. See figure 15.

27. Hold closer assembly and door bracket in a level position. Mark and drill 1/8" hole in end of the adjustment slot. See figure 15 (CAUTION: DO NOT drill through both sides of screen panel).



Figure 15

28. Attach door bracket with a #10 x 5/8" screw in the adjustment slot.

Adjust Closing Tension

29. Adjust closing tension by moving the closer door bracket. Tighten screw in the adjustment slot.
30. Operate door to verify that it closes satisfactorily.
31. Drill remaining 1/8" hole and secure with the other #10 x 3/4" screw as provided in kit.

Adjust Closing Speed

32. To vary the closing speed of the screen door, use a screwdriver to rotate the closing speed adjustment screw located at the door bracket end of cylinder assembly. See figure 16.



Figure 16

Sill Sweep Weather Strip

33. Use a utility knife to trim the weather strip ensuring that there is a complete seal across the entire length of the sill. See figure 17.

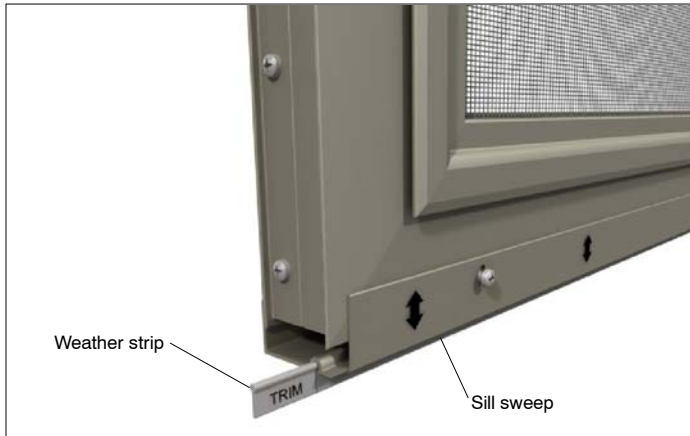


Figure 17

Sill Sweep Adjustment

34. Check to see if sill sweep is resting on sill track evenly. If not, loosen screws, adjust sill sweep, and tighten screws. See figure 17.

Mesh Screen Or Storm Insert Installation

35. Place insert into the panel opening and push firmly at the perimeter to snap insert into place. See figure 18.



Figure 18

Mesh Screen Or Storm Insert Removal

36. Slide insert to the left or right to disengage locking mechanism on the opposite side. Rotate disengaged side of insert from panel and lift insert from panel. See figure 19.

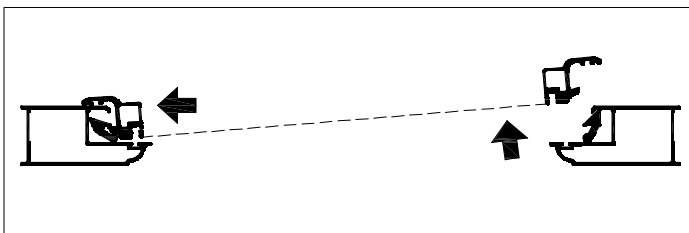


Figure 19

Optional Top Screen Door Closer Installation

37. Position head jamb bracket in upper inside corner of door frame against side jamb and 3/8" (10) from face of door. Mark and drill three 1/8" pilot holes.
38. Attach head jamb bracket with #10 x 7/8" screws. See figure 20.



Figure 20

39. Place hold-open-washer on closer rod and position over lugs. This will give proper tension for installation. See figure 21.

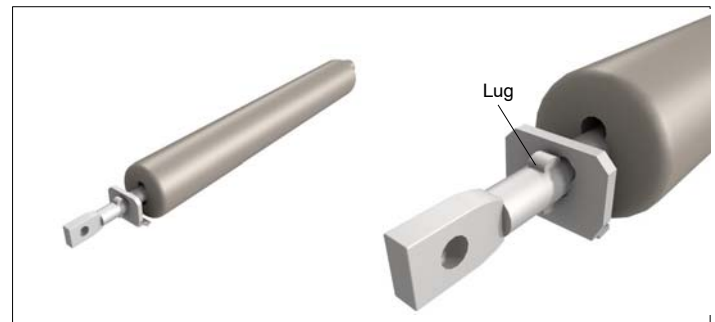


Figure 21

40. Close and latch the door. Attach closer assembly to the door and jamb brackets with the door and jamb bracket connecting pins. See figure 22.



Figure 22

41. Hold closer assembly and door bracket in a level position. Mark and drill 1/8" hole in end of slot opposite cylinder. (Use caution: DO NOT drill through both sides of screen panel).
42. Attach door bracket with a #10 x 5/8" screw in the adjustment slot.

Adjust Closing Tension

43. Adjust closing tension by moving the closer door bracket. Tighten screw in the adjustment slot.
44. Operate door to verify that it closes satisfactorily.
45. Drill remaining 1/8" hole and secure with the other #10 x 3/4" screw as provided in closer kit.