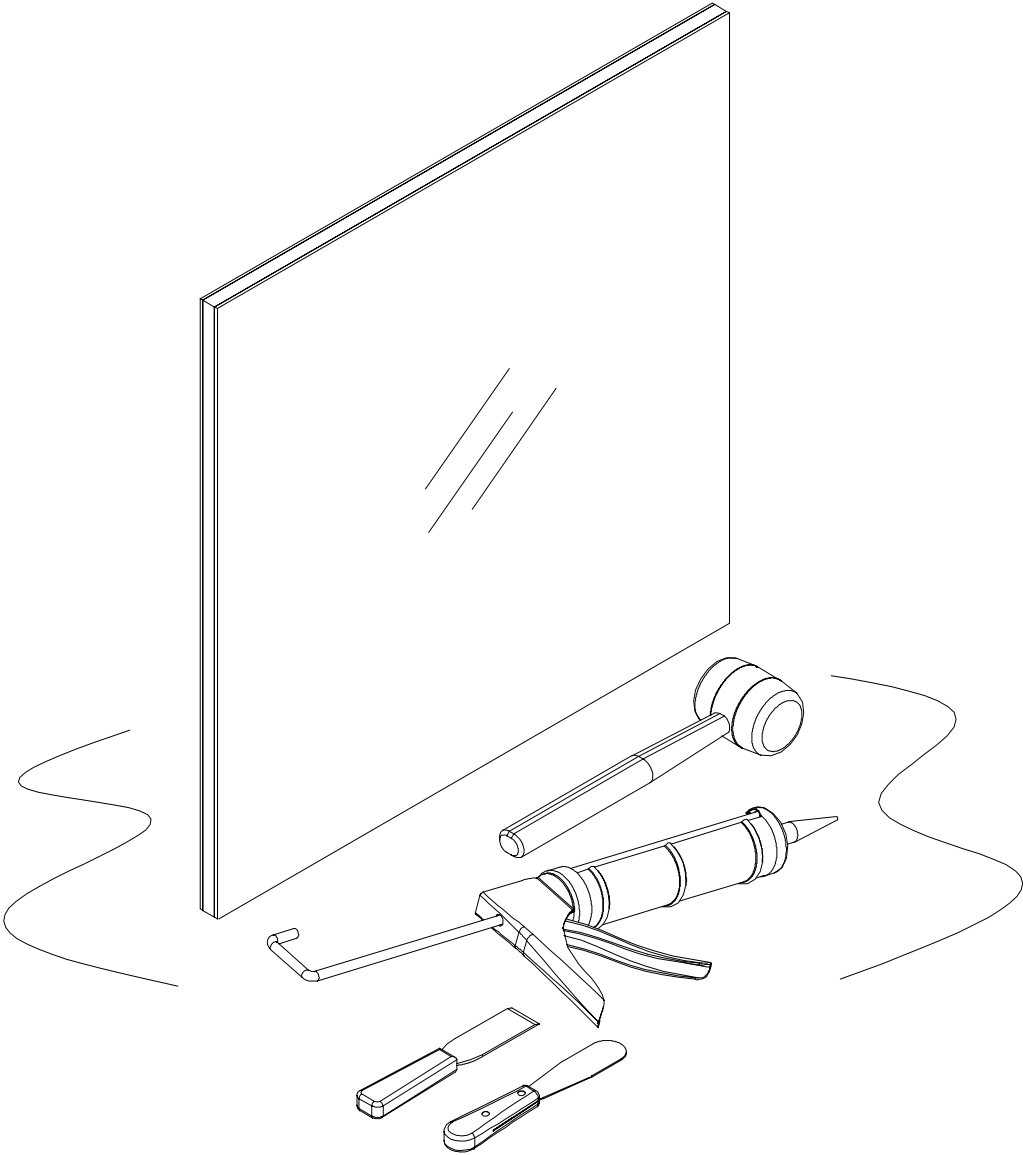


Marvin Casemaster Clad Sash Reglazing Instructions



MARVIN 
Windows and Doors
Made for you.®

BEFORE YOU BEGIN

- Read these instructions thoroughly **BEFORE** beginning to reglaze your Marvin window.
- Alterations to Marvin products including window films, insulating or reflective interior window treatments or additional glazings can cause excessive heat buildup and/or condensation. This may lead to premature failures not covered under warranty by Marvin Windows and Doors.
- Prior to beginning, inspect new glass for: size and type, cracks, scratches, collapse, water spots, dirt or other imperfections.
- Replacement parts listed within these instructions may be obtained by contacting your Marvin representative.

WARNING: Practice safety! Wear safety glasses or goggles and appropriate protective equipment, including gloves, when reglazing your Casemaster Clad windows.

ATTENTION: Specifications and technical data are subject to change without notice. For the most current version of this instruction, visit our website at www.marvin.com.

IMPORTANT: The following instructions detail the removal of sash and reglazing of clad Casemaster sash produced on 3/31/03 or later. For sash produced before this date, see instructions, "In Sash Clad Windows—Reglazing Instructions", reference part number 19970639.

NOTE: Numbers listed in parentheses () are metric equivalents in millimeters rounded to the nearest whole number.

STANDARD PARTS NEEDED

Replacement glass
Neutral curing silicone (contact your Marvin representative for specific product)

YOU WILL NEED TO SUPPLY

Safety glasses	Protective gloves
Small pry bar	Caulking gun
Flexible putty knife	Rubber mallet
#2 Phillips screwdriver	Isopropyl alcohol
Scrap wood blocks	Hammer
Plastic tipped hammer	
Flat bladed screwdriver or other tool to remove old silicone (see section of "Removing Old Glass" for details)	

INDEX

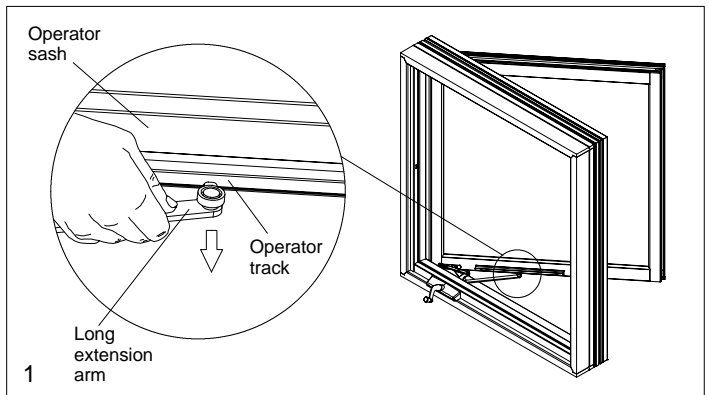
	Page
Removing Sash	1
Removing Old Glass	1
Installing New Glass	2
Replacing Sash	3
Replacing Transom/Picture Units	3

CAUTION: Replacement glass can be very heavy. It may be necessary to obtain the assistance of another individual when attempting to remove or replace glass and/or sash. Always use proper eye and hand protection when handling glass.

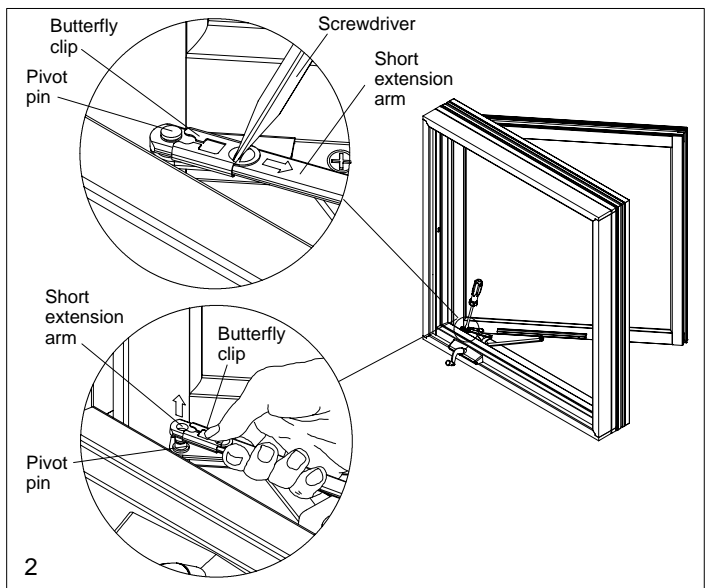
REMOVING SASH

NOTE: Sash with daylight openings of less than 14 1/2" (368) will use hinged single arm operator gear. Skip to step 3 for these units.

1. **Units with Dual Arm Roto Gear:** Crank open the sash until the nylon roller on the long extension arm of the roto gear lines up with the arrow on the operator track. (The operator track is located on the bottom of the operating sash). Disconnect the long extension arm from the operator track by pushing the roller down through the opening which is in line with the arrow. See illustration 1.

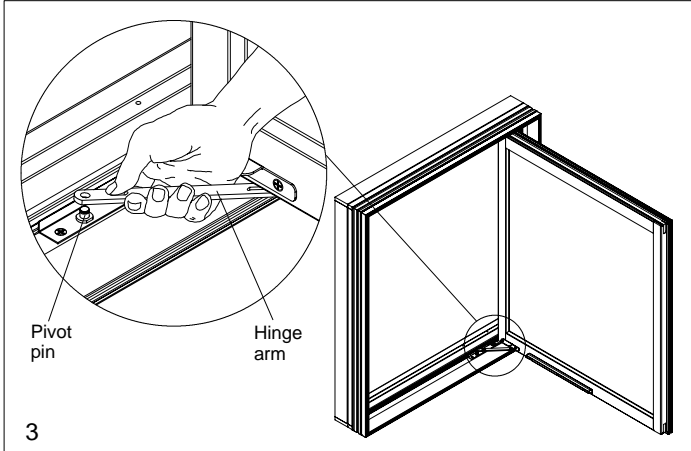


2. Using a screwdriver, snap back the butterfly clip which locks the Roto gear short extension arm to the operator sash bracket pivot pin. Disconnect the short extension arm by lifting it off the pivot pin. See illustration 2. Skip to step 4.

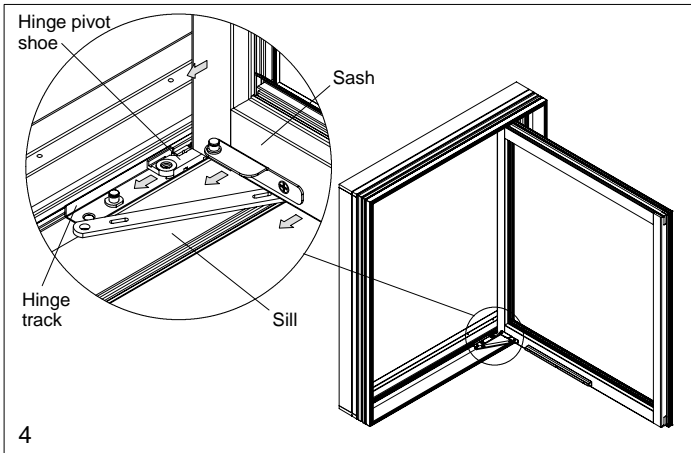


3. **Units with Dyad (single arm) Roto Gear:** Crank open the sash. Using a screwdriver snap back the butterfly clip which locks the dyad operator extension arm to the operator bracket pivot pin. (Similar to that shown in illustration 2.)

- With the sash open 90 degrees remove the bottom hinge arm from the hinge track pivot pin. Some models have a snap ring on the pin, these arms can be disconnected by prying off with a screwdriver. See illustration 3. Repeat for the top hinge. The sash is now free to swing so care must be taken to prevent damage to the sash and avoid personal injury.

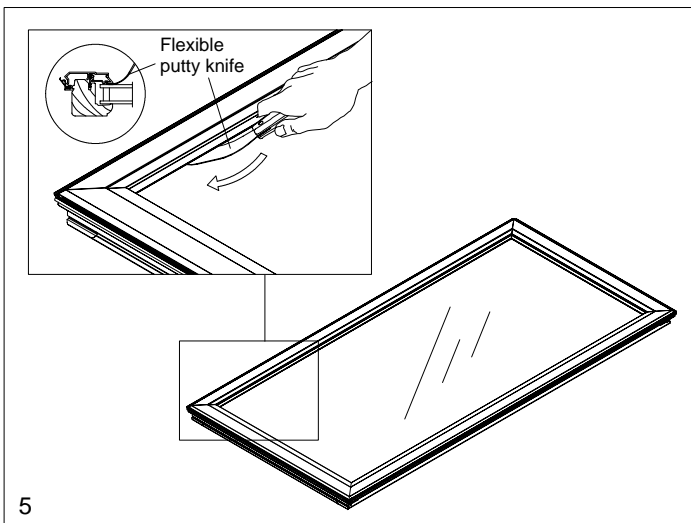


- Remove the sash by sliding hinge pivot shoes toward the pivot pins until they disengage from the hinge track. Carefully remove sash from unit frame. See illustration 4.

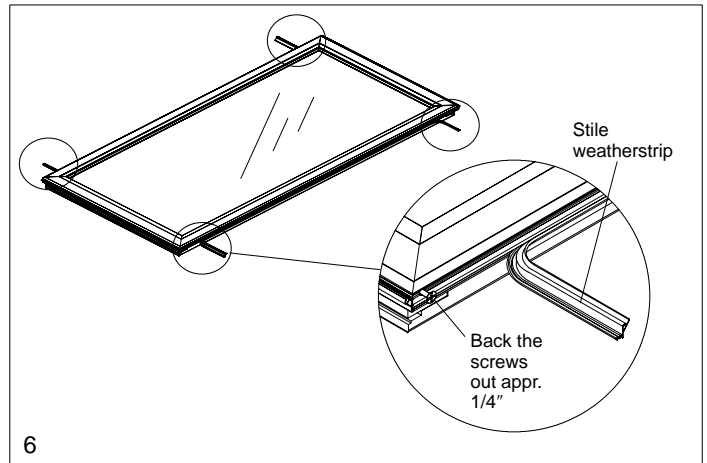


REMOVING OLD GLASS

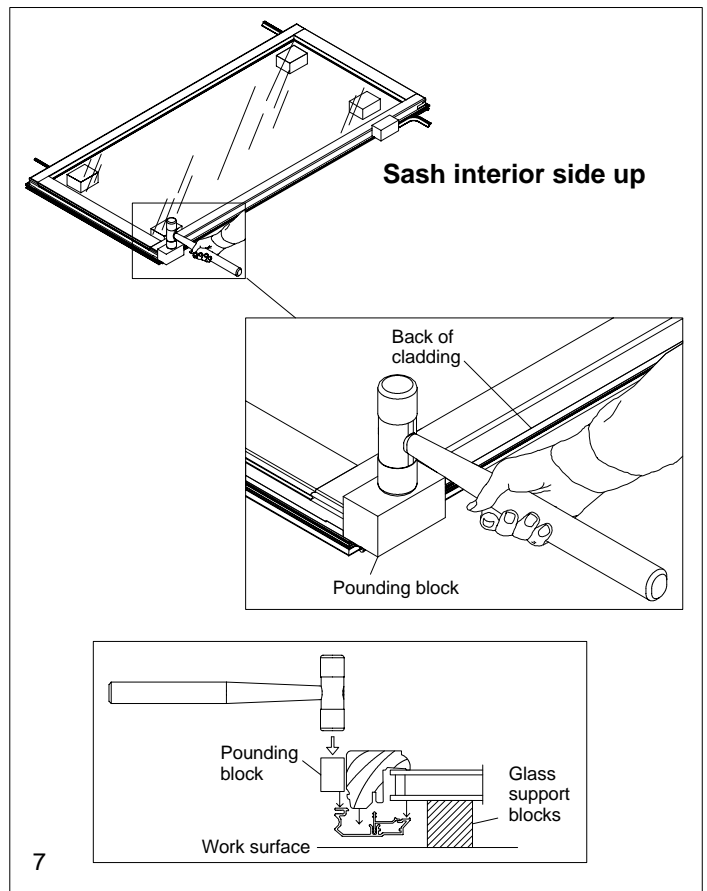
- Place the sash on a flat sturdy surface, exterior side up. Cut the exterior silicone glazing by pushing a flexible putty knife between the glass and the aluminum cladding. Work the knife around the entire perimeter. See illustration 5.



- Partially remove the sash weatherstrip from all four corners of the sash on the stile side to expose the screws. Using a Phillips screwdriver, back the screws out approximately 1/4" (6). DO NOT COMPLETELY REMOVE THE SCREWS. See illustration 6.

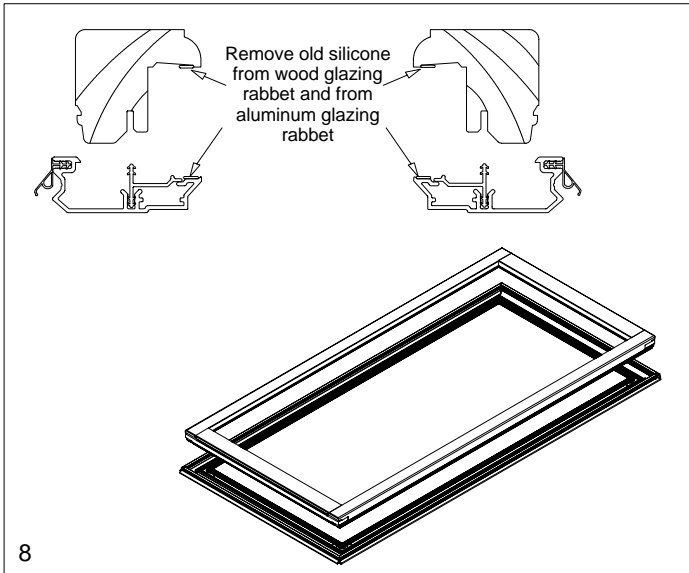


- Carefully turn the sash over and cut the interior glazing between the glass and wood in the same manner as the exterior.
- Place 4 blocks of wood between the table and the exterior glass pane. Blocks should be high enough to elevate the entire sash off the work surface. Starting at a corner on the stile, place another small wood block on the back side of the cladding near the sash weatherstrip and begin pounding the cladding from the wood. Be sure to start over both stile and rail cladding. Tap firmly but be careful not to bend corner key. Once the corner comes loose, continue around the perimeter of the sash every 6-8" (6-8). The cladding will drop onto the table once completely released from the wood. Set aluminum assembly aside. See illustration 7.

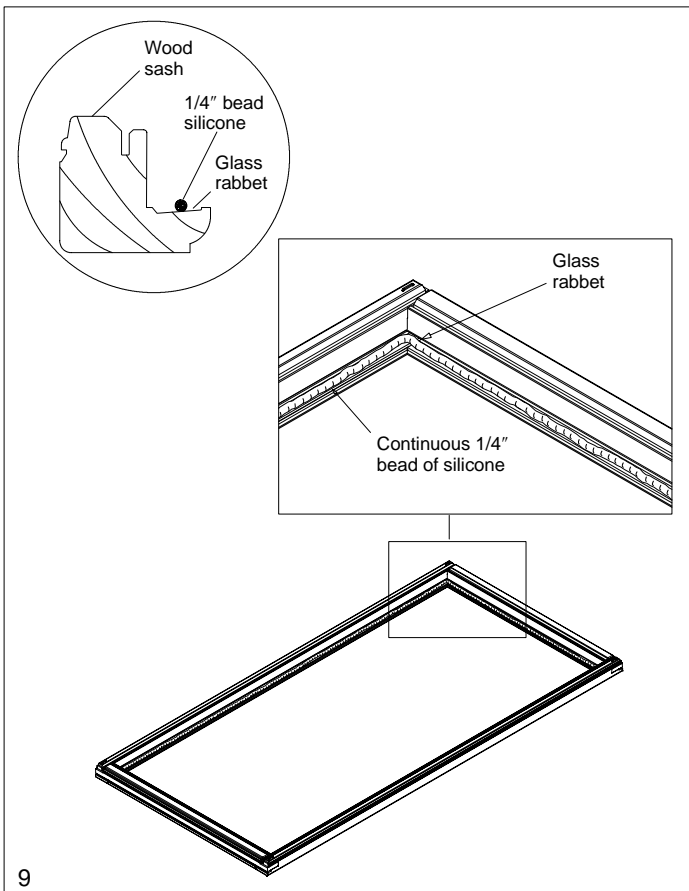


CAUTION: Before performing the next step, avoid personal injury and be sure that you are wearing protective gloves and safety glasses.

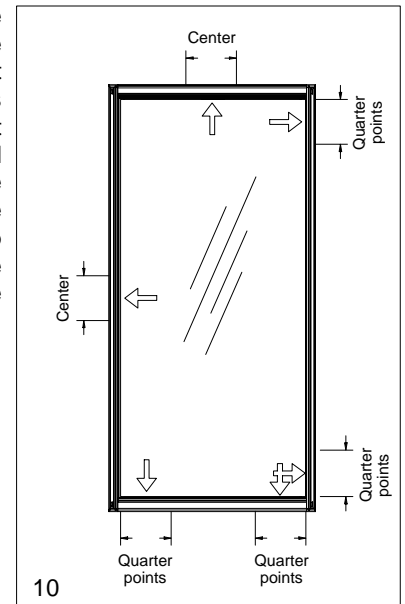
- Carefully press down on the glass near the wood assembly to release. Discard old glass and save the rubber glazing blocks for use later.
- Remove all the old silicone from the glazing rabbet on both wood and aluminum surfaces. Use a flat headed screwdriver or other tool to completely remove all silicone from the aluminum glazing rabbet. See illustration 8. Remove any remaining silicone residue from all glazing surfaces with isopropyl alcohol.



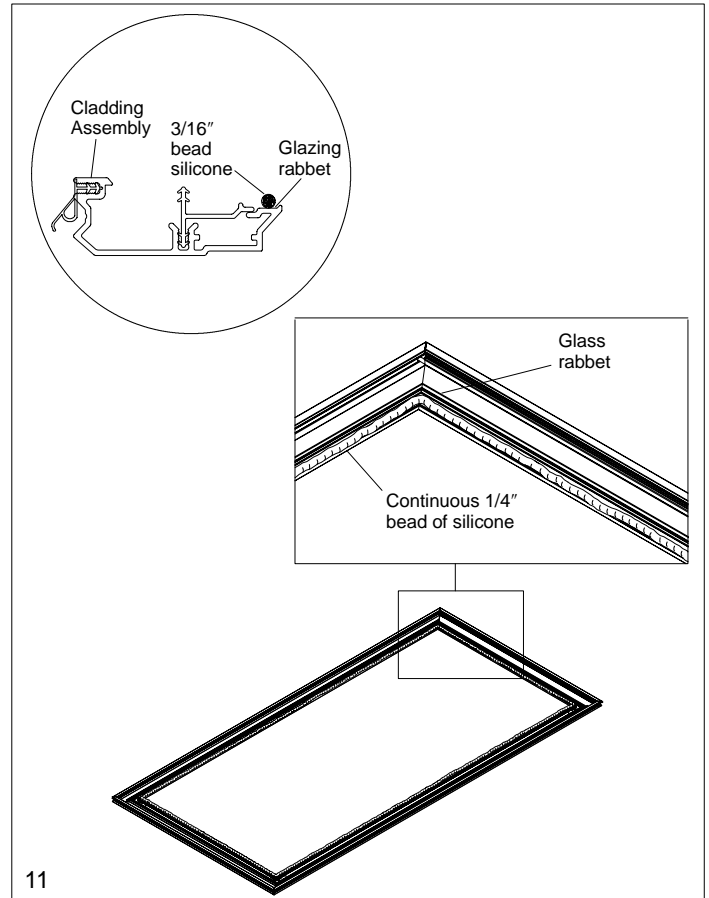
- Apply a 1/4" continuous bead of silicone to the wood glazing rabbet. See illustration 9.



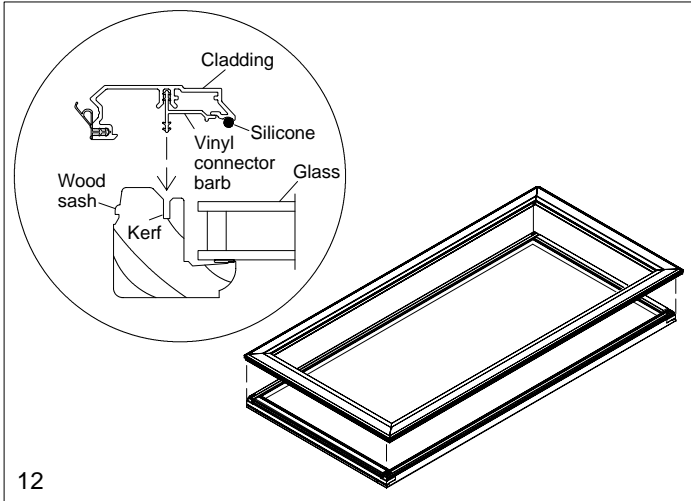
- Carefully place the new glass into the wood assembly. Insert rubber glazing blocks removed earlier at quarter points around the glass: two on the bottom, two on one side, one on the top and one on the opposite side. See illustration 10.



- Tighten the screws on the cladding assembly. Inspect the corners to ensure proper alignment of the miter joint. It may be necessary to back screws out and retighten or replace the corner keys. If the latter is the case, contact your Marvin representative for details and ordering of parts.
- Inspect vinyl connectors on cladding assembly and replace if damaged. Make sure all are seated properly.
- Apply a 3/16" continuous bead of silicone in glazing rabbet of cladding assembly. See illustration 11.



- Carefully lay the cladding assembly on top of glass and wood sash assembly. Align the cladding assembly so that the vinyl connector barb lines up with the kerf in the wood assembly. See illustration 12.

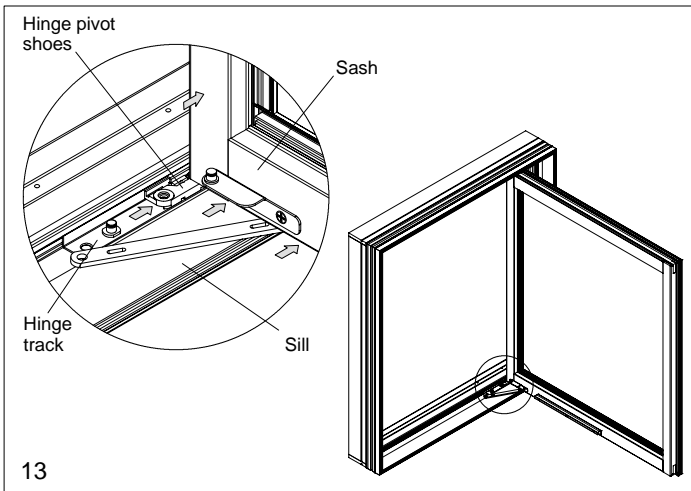


- Push down forcefully on the corners of the cladding assembly. Use a large rubber mallet to tap the cladding down until fully seated into the wood assembly.
- Clean any excess silicone and squeeze out with isopropyl alcohol.

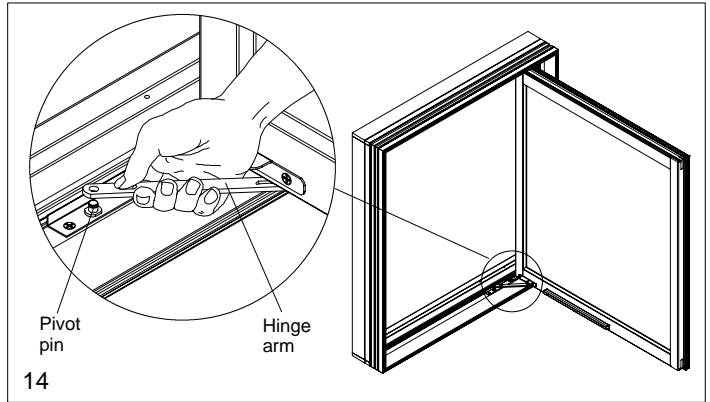
REPLACING SASH

CAUTION: It may be necessary to obtain the assistance of another individual before attempting the following steps. Do not let go of sash until all sash hardware is properly attached to the frame.

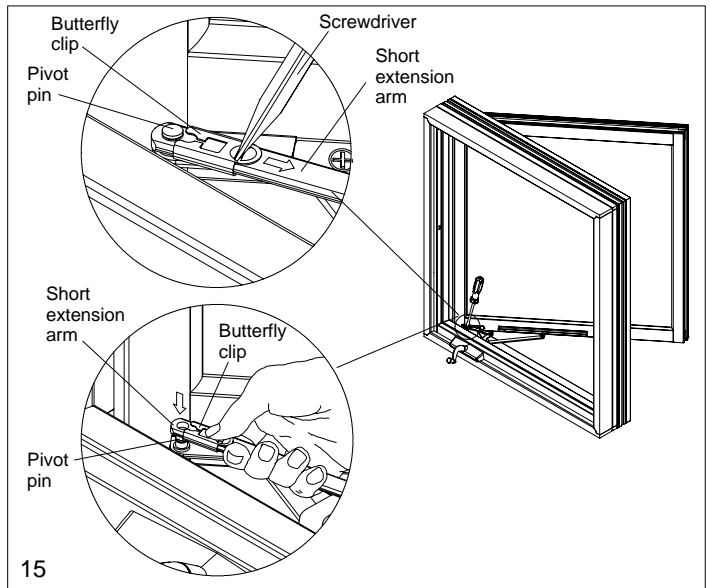
- Place the sash in the frame opening at 90 degrees, positioning the sash hinge shoes on the hinge tracks close to the sash track studs. Engage the shoes with the track flange and slide into the installed position (away from the studs). See illustration 13.



- Attach the top hinge arm to the track stud. Tap with a plastic headed hammer to force the arm over the snap ring or use a flat screwdriver to return the butterfly clips to the locked position (depending on hardware type). Repeat this procedure for the bottom hinge. See illustration 14.



- Snap the short extension arm onto the sash bracket stud. Use a flat bladed screwdriver to return the butterfly clip to the locked position. See illustration 15 (dual arm roto gear shown). On units with single arm roto-gear, crank the sash shut.



- On units with dual arm Roto gear, crank open the extension arm until the nylon roller is positioned under the arrow on the sash track.
- Center the roller under the opening and pull up into the track. Turn the crank to engage the roller fully into the track and check for proper sash operation. See illustration 16.

